

Sony Network Camera Notice

Important Notice: Please be advised that certain models of Sony network cameras may have a potential security vulnerability. There is a possibility that the client PC (i.e. the computer connected to a camera) can be exploited by third parties.

To address this issue, please download the free of charge firmware. If you have any questions, please contact Sony at 800-883-6817.

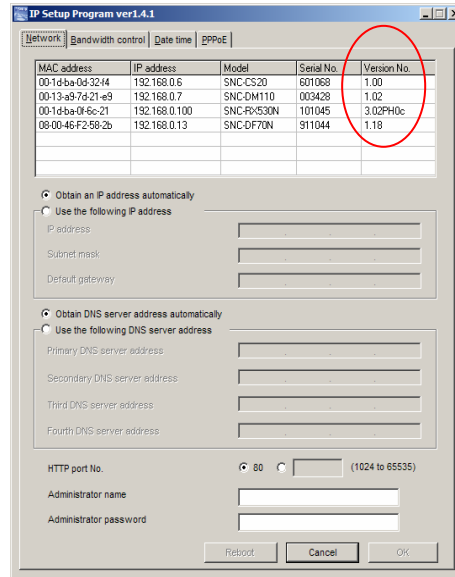
The affected model numbers and the associated firmware versions are shown below.

Applicable model	Firmware version	Sales period
SNC-RZ25N	Older than 1.30	By December, 2008
SNC-P1, SNC-P5	Older than 1.29	By December, 2008
SNC-CS10, SNC-CS11	Older than 1.06	By December, 2008
SNC-DF40N, SNC-DF70N	Older than 1.18	By December, 2008r
SNC-RZ50N, SNC-CS50N	Older than 2.22	By December, 2008
SNC-DF85N, SNC-DF80N, SNC-DF50N	Older than 1.12	By December, 2008
SNC-RX570N/W, SNC-RX570N/B, SNC-RX550N/W, SNC-RX550N/B, SNC-RX530N/W, SNC-RX530N/B	3.00, or older than 2.31	By December, 2008

Please note that there are two ways to check the model number and firmware on your camera(s):

Option 1) Use the IP setup program: You can run the IP setup program that came with your camera. If you do not have the program it can be downloaded at the following site: www.sony.ca/ip/support.htm

Once you launch the IP setup program, the camera(s) in the LAN segment will show up after a few seconds.
See example in the figure below:



Option 2 Use Internet Explorer:

Launch Internet Explorer to access your network camera. You should see the model and the home page. Then select 「Setting」 and enter user name and password when prompted. Then click [System Menu] → System Tab. Firmware version 「Software Version」 will be displayed as shown below:

